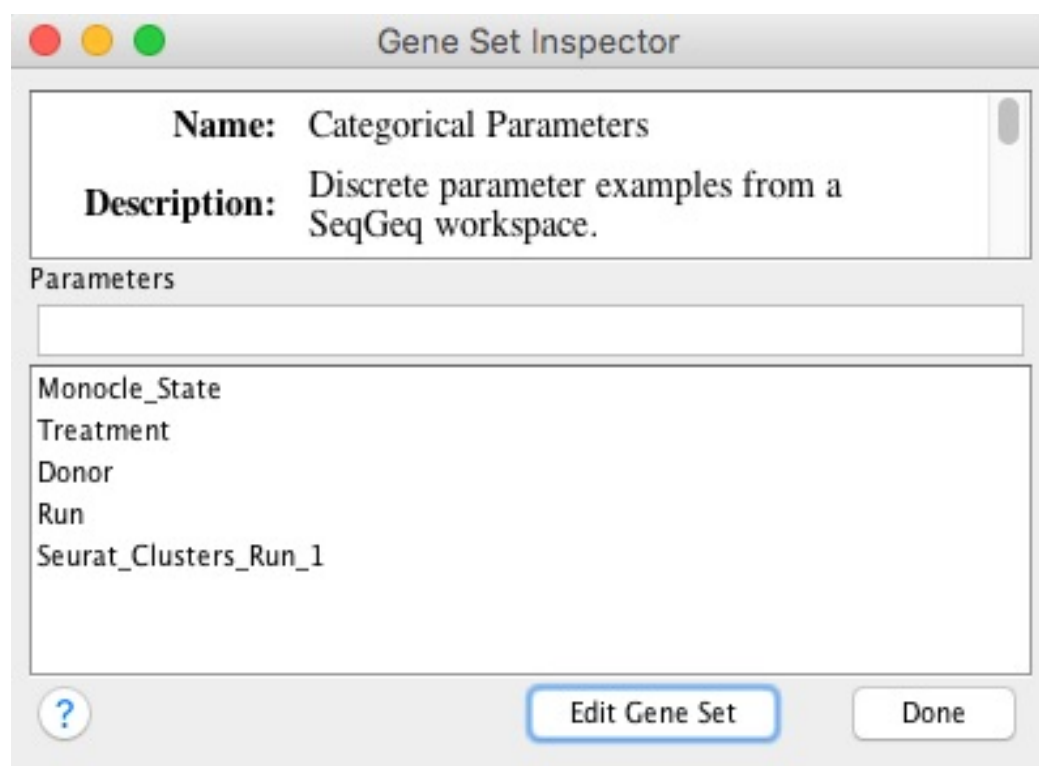


How-to-AutoCatGate

The Automatic Categorical Gating (AutoCatGate) plugin can be used to quickly and conveniently create gates on parameters with discrete values.

Background

Parameters with discrete values include: "SampleID", "Subject", "AnimalModel", "Cluster#", etc. These parameters can be entered manually as numerical annotations within a data matrix, or may be generated during the course of an analysis:



In the case of **concatenated data files** (separate data files with common parameters combined into a single matrix) FlowJo or SeqGeq will automatically insert the "SampleID" categorical parameter into your data, for convenience in separating these individual files in downstream analyses, and the AutoCatGate plugin makes this separation possible in just a few very simple steps.

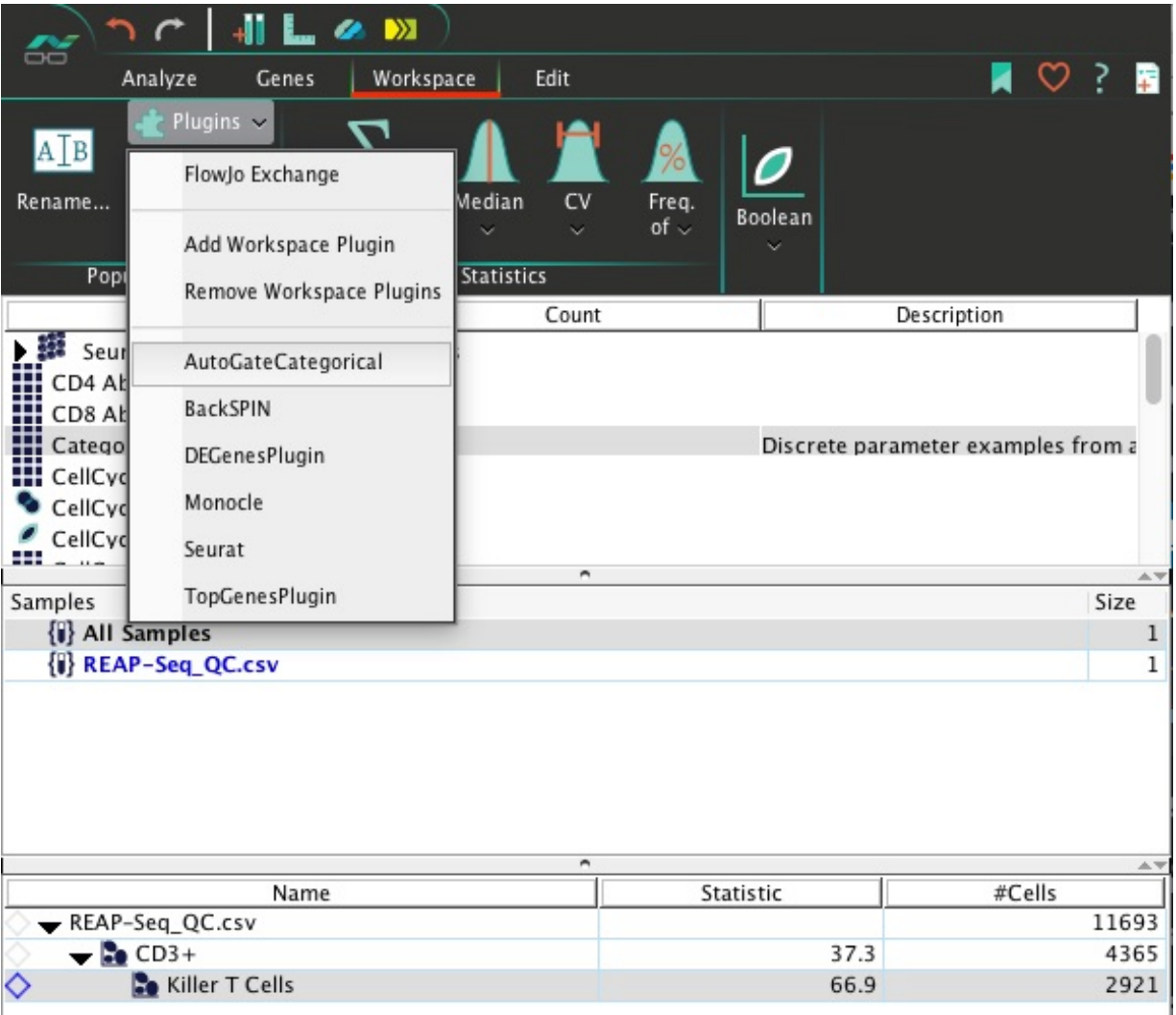
Install

Insert the AutoCatGate JAR file into your plugins directory, associated with the

software via the Diagnostics preferences.

Workflow

The plugin will be active in the Plugins section of your Workspace tab once a population is selected there:



Once selected this plugin will open a user interface where you can select any parameter present in the chosen population:

Autogate categorical parameters 0.3

This plugin creates sub-populations based on a selected categorical parameter

Parameter Sets

All (32877)
CD4 Abs (2 of 2 Valid)
CD8 Abs (2 of 2 Valid)
Categorical Parameters (5 of 5 Valid)
CellCycleG1Tirosh (40 of 43 Valid)
CellCycleG1Tirosh \cup CellCycleG2MTirosh (94 of 97 Valid)
CellCycleG1Tirosh \cup CellCycleG2MTirosh \cap Top Genes - REAP-Seq_QC Killer
CellCycleG2MTirosh (55 of 55 Valid)
DEG: REAP-Seq_QC: vs. Monocle_Num_Genes_Expressed 1 (11 of 11 Valid)
DEG: REAP-Seq_QC: vs. Monocle_Num_Genes_Expressed 2 (4 of 4 Valid)
DEG: REAP-Seq_QC: vs. Monocle_Num_Genes_Expressed 3 (5 of 5 Valid)
DEG: REAP-Seq_QC: vs. Monocle_Num_Genes_Expressed 4 (7 of 7 Valid)

Parameters

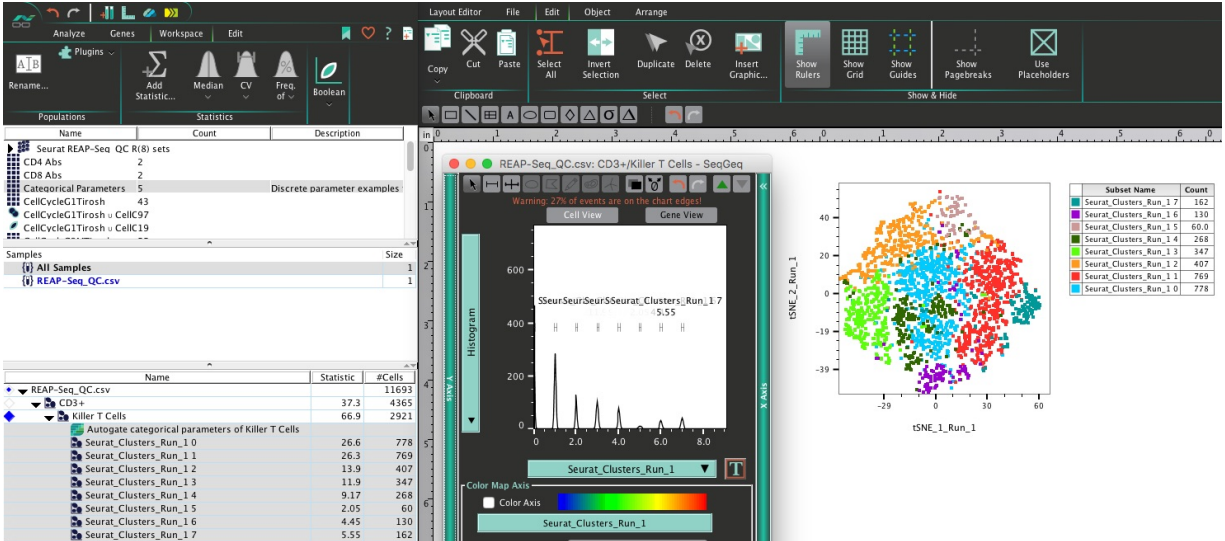
Monocle_State
Treatment
Donor
Run
Seurat_Clusters_Run_1

Name for new populations (optional)

Cancel

OK

Running the plugin on any categorical parameter will generate new populations (gates) encompassing events corresponding to all discrete values available in that parameter:



Any questions regarding plugins should be directed to our crack team of application's specialists: techsupport@flowjo.com or seqgeq@flowjo.com